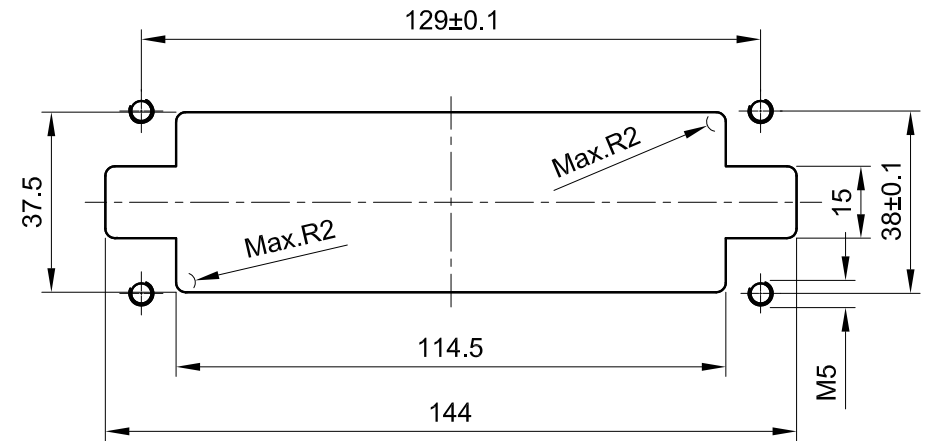
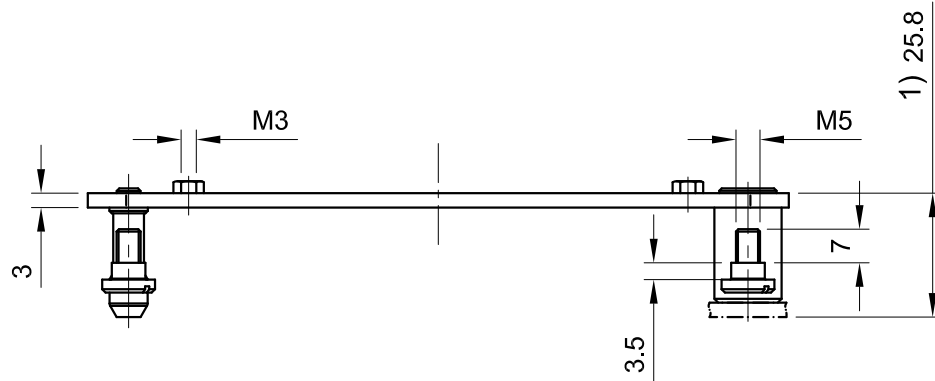


Panel cut out/面板开孔尺寸



1) Distance for electrical and FOC contacts max. 27mm
for pneumatic contacts max. 26.5mm



All Dimensions in mm
Original Size DIN A4

Date
2019-09-29

Drawing No.
TC6763564

Rev.
A00

Scale
1:1.5



InKonn (Suzhou) Electric Technology Co., Ltd.

Part No.
10 11 024 8900

Created by
Shuxu Huang

Checked by
Yiyi Luo

Page
1/1

Type Name
DFB24